



2023

Annual Report

YouthCrisisCenter

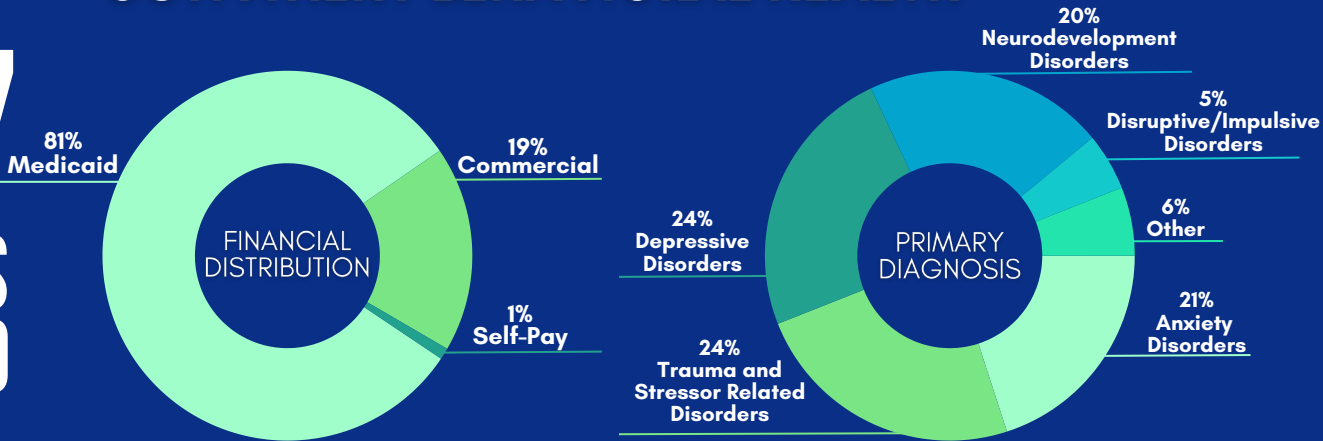
**Building a
healthier
community by
empowering young
people and
families to rise
above adversity.**

WHO WE SERVE

Our nationally accredited programs provided residential crisis care services, mental health counseling, life skills training and transitional living services to 2,203 individuals in 2023.

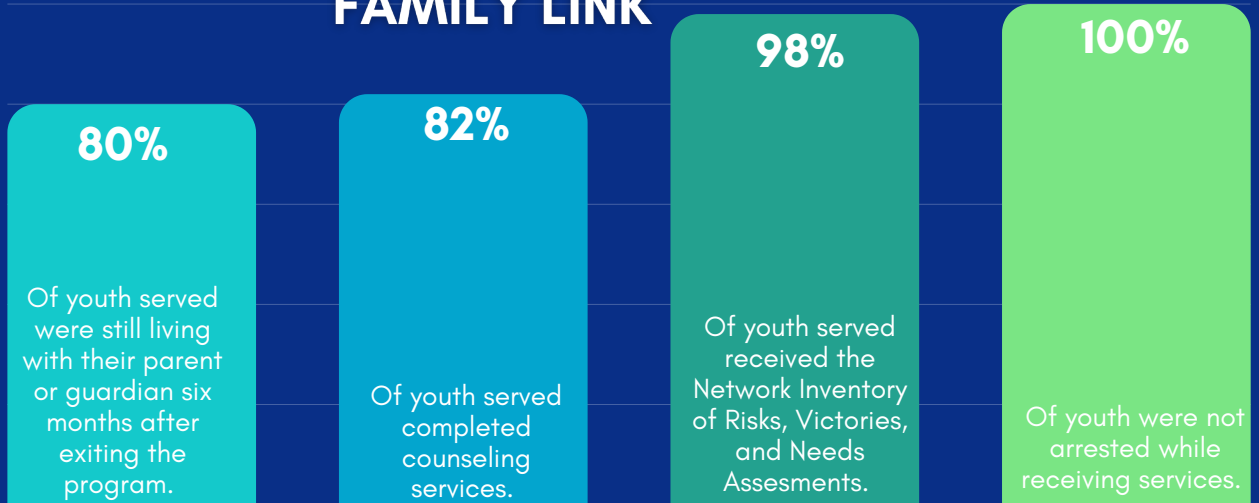
OUTPATIENT BEHAVIORAL HEALTH

527
CLIENTS
SERVED



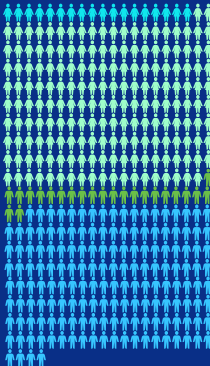
FAMILY LINK

551
YOUTH
SERVED



RESIDENTIAL CRISIS CARE

384
YOUTH
SERVED



199 FEMALES
18 ADMITTED UNDER THE DOMESTIC VIOLENCE RESPITE PROGRAM.

185 MALES
23 ADMITTED UNDER THE DOMESTIC VIOLENCE RESPITE PROGRAM.



PROVIDED A TOTAL OF:



S.N.A.P. PROGRAMS

633 CHILDREN SERVED

S.N.A.P. IN SCHOOLS

OPERATED IN SCHOOLS **19**
15 IN DUVAL
3 IN ST. JOHN'S
1 IN CLAY

600 CHILDREN SERVED
 IN **377** SESSIONS



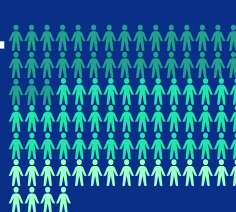
Of participants completed the program



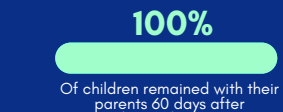
Of youth attended school regularly 30 days after completing the program

S.N.A.P. CLINICAL

IN DUVAL
 WE SERVED **20** CHILDREN
28 PARENTS
12 SIBLINGS
 IN **418** GROUPS



IN ST. JOHN'S
 WE SERVED **13** CHILDREN
14 PARENTS
7 SIBLINGS
 IN **147** GROUPS



TOUCHSTONE VILLAGE

23 YOUNG ADULTS SERVED

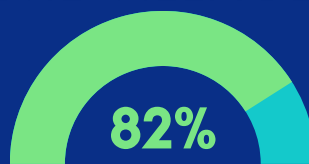
18 ENTERED THE PROGRAM WITH A HIGH SCHOOL DIPLOMA



10 ENROLLED IN HIGHER EDUCATION WHILE IN THE PROGRAM



1 GRADUATED HIGH SCHOOL WHILE IN THE PROGRAM



Of Residents successfully mastered life skills.



Of Residents received employment skills training during the first 90 days in the program.

HOUSE OF HOPE

24 YOUNG ADULTS SERVED

WE PROVIDED:

600 SNACKS

1,332 DAYS OF CARE

1,800 MEALS



Of residents successfully completed services.



Of residents were screened by YCC nursing staff within 24 hours of intake.

FINANCIALS

REVENUE

| | |
|---------------------------------|-------------|
| GOVERNMENT CONTRACTS AND GRANTS | \$2,362,192 |
| PRIVATE FUNDING/DONATIONS | \$1,482,549 |
| OUTPATIENT SERVICES | \$664,138 |
| OTHER | \$29,840 |
| INVESTMENT INCOME | \$28,240 |

TOTAL REVENUE \$4,566,959

EXPENSES

| | |
|-----------------------------|-------------|
| PROGRAM SERVICES | \$4,183,057 |
| MANAGEMENT & ADMINISTRATION | \$539,817 |
| FUNDRAISING | \$289,174 |

TOTAL EXPENSES \$5,021,048